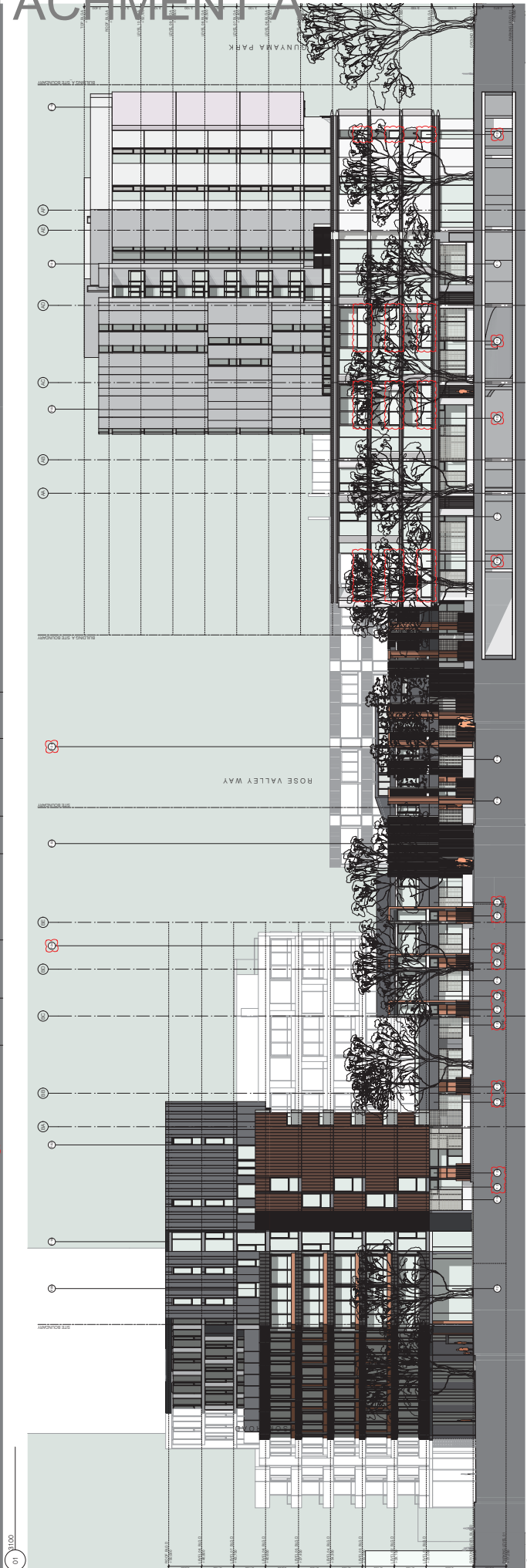
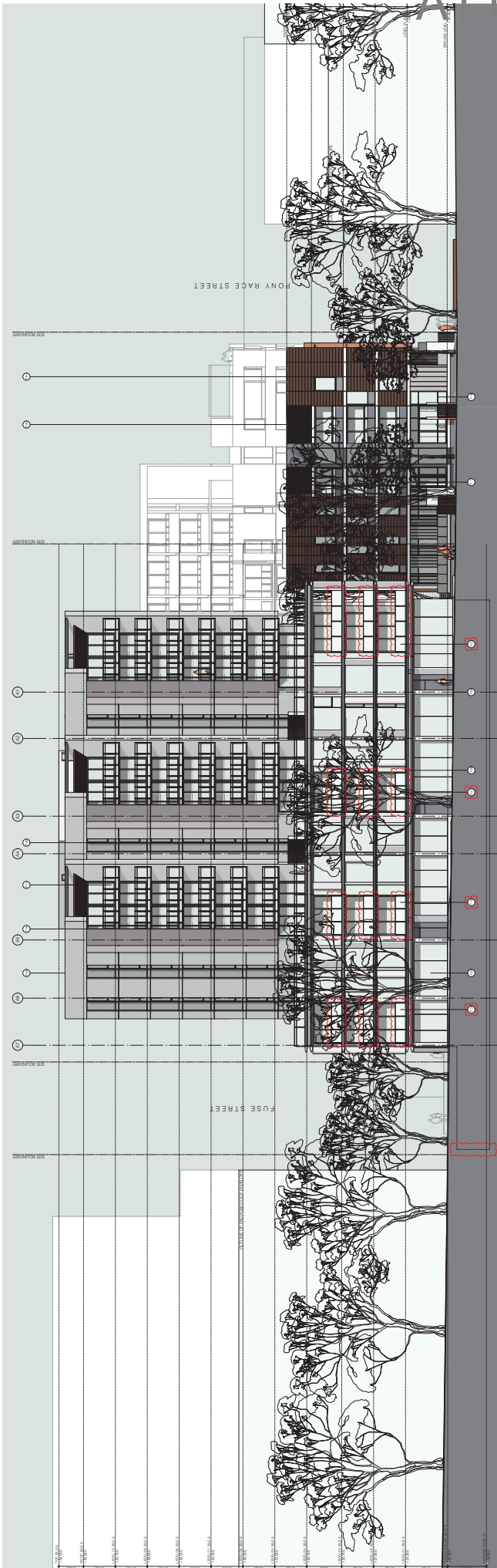


ATTACHMENT A



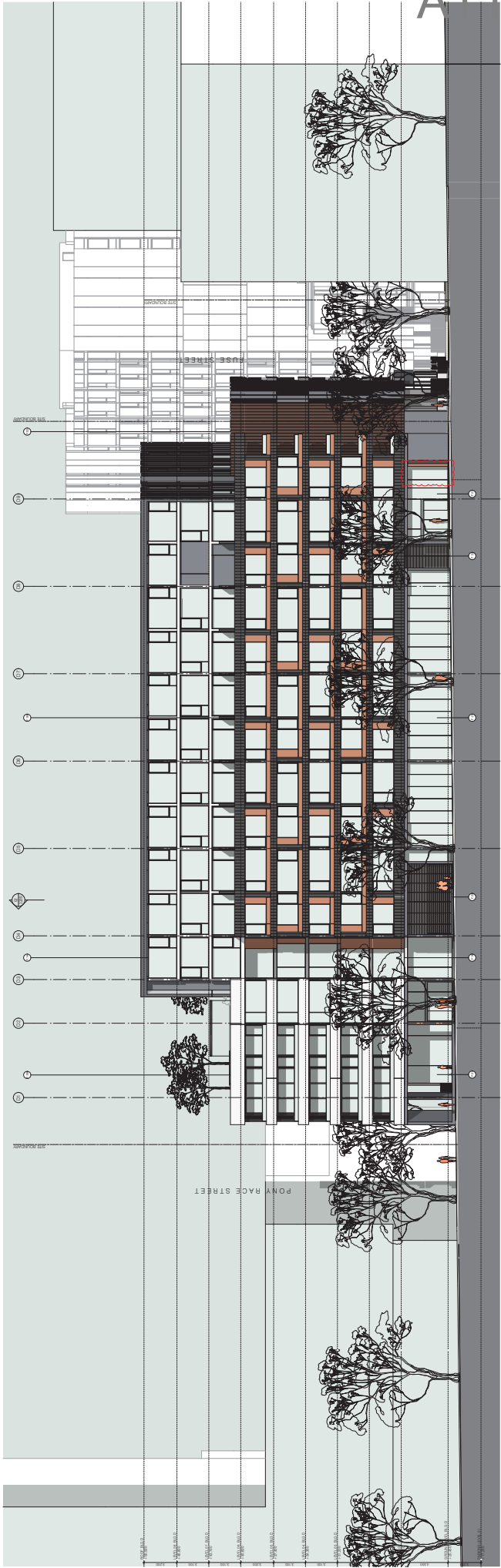
NO.	DATE	DESCRIPTION	BY	CHKD	APP'D
01	20/11/14	Issue for information	LC	JK	LC
02	30/11/14	Issue for Development Application	LC	JK	LC
03	07/02/15	Issue for Development Application	LC	JK	LC

Revisions & Changes Log
 01: Issue for information
 02: Issue for Development Application
 03: Issue for Development Application
 04: Issue for Development Application
 05: Issue for Development Application
 06: Issue for Development Application
 07: Issue for Development Application
 08: Issue for Development Application
 09: Issue for Development Application
 10: Issue for Development Application
 11: Issue for Development Application
 12: Issue for Development Application
 13: Issue for Development Application
 14: Issue for Development Application
 15: Issue for Development Application
 16: Issue for Development Application
 17: Issue for Development Application
 18: Issue for Development Application
 19: Issue for Development Application
 20: Issue for Development Application
 21: Issue for Development Application
 22: Issue for Development Application
 23: Issue for Development Application
 24: Issue for Development Application
 25: Issue for Development Application
 26: Issue for Development Application
 27: Issue for Development Application
 28: Issue for Development Application
 29: Issue for Development Application
 30: Issue for Development Application
 31: Issue for Development Application
 32: Issue for Development Application
 33: Issue for Development Application
 34: Issue for Development Application
 35: Issue for Development Application
 36: Issue for Development Application
 37: Issue for Development Application
 38: Issue for Development Application
 39: Issue for Development Application
 40: Issue for Development Application
 41: Issue for Development Application
 42: Issue for Development Application
 43: Issue for Development Application
 44: Issue for Development Application
 45: Issue for Development Application
 46: Issue for Development Application
 47: Issue for Development Application
 48: Issue for Development Application
 49: Issue for Development Application
 50: Issue for Development Application
 51: Issue for Development Application
 52: Issue for Development Application
 53: Issue for Development Application
 54: Issue for Development Application
 55: Issue for Development Application
 56: Issue for Development Application
 57: Issue for Development Application
 58: Issue for Development Application
 59: Issue for Development Application
 60: Issue for Development Application
 61: Issue for Development Application
 62: Issue for Development Application
 63: Issue for Development Application
 64: Issue for Development Application
 65: Issue for Development Application
 66: Issue for Development Application
 67: Issue for Development Application
 68: Issue for Development Application
 69: Issue for Development Application
 70: Issue for Development Application
 71: Issue for Development Application
 72: Issue for Development Application
 73: Issue for Development Application
 74: Issue for Development Application
 75: Issue for Development Application
 76: Issue for Development Application
 77: Issue for Development Application
 78: Issue for Development Application
 79: Issue for Development Application
 80: Issue for Development Application
 81: Issue for Development Application
 82: Issue for Development Application
 83: Issue for Development Application
 84: Issue for Development Application
 85: Issue for Development Application
 86: Issue for Development Application
 87: Issue for Development Application
 88: Issue for Development Application
 89: Issue for Development Application
 90: Issue for Development Application
 91: Issue for Development Application
 92: Issue for Development Application
 93: Issue for Development Application
 94: Issue for Development Application
 95: Issue for Development Application
 96: Issue for Development Application
 97: Issue for Development Application
 98: Issue for Development Application
 99: Issue for Development Application
 100: Issue for Development Application

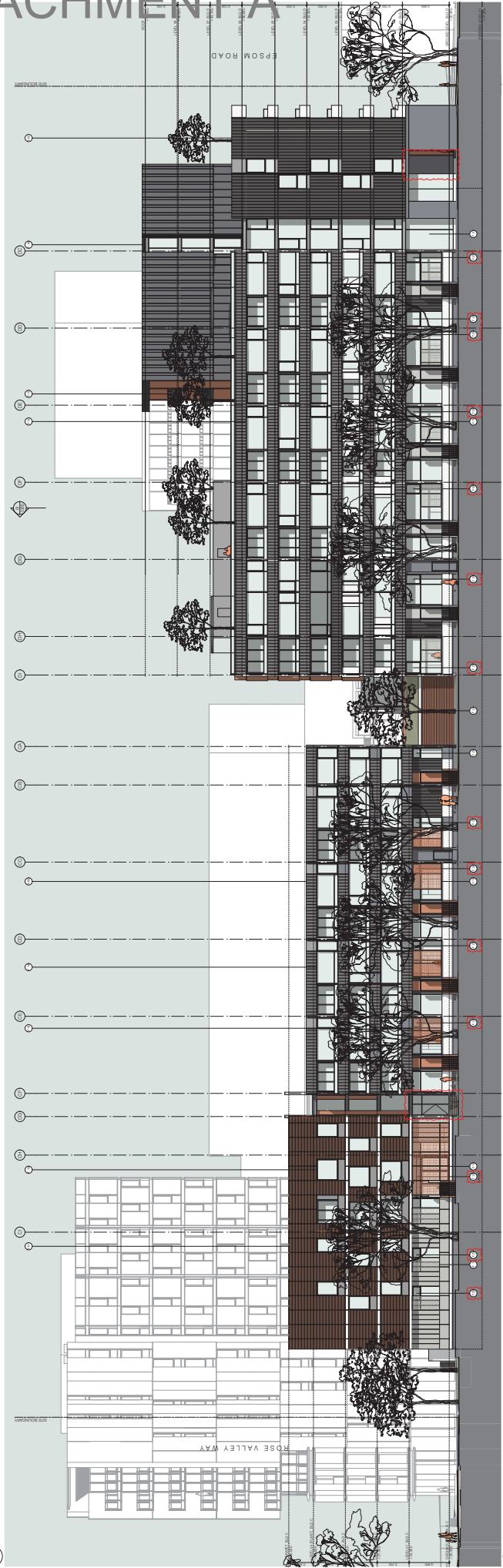
Architect A+C ARCHITECTS 78 North Street Cheltenham VIC 3198 AUSTRALIA PH: +61 2 8311 8224 FX: +61 2 8311 8200 ABN: 53 603 782 250	Project 94- 92 Epsilon Road Zetland	Drawing Title Elevations Drawing Status Approval	Scale 1:200@A1 1:400 @A3	Drawing No. DK-00-3100	Issue 04
Client Meriton MERITON REAL ESTATE GROUP	Key 	Description Issue for information Issue for Development Application Issue for Development Application	Ver LC LC LC	App'd JK JK JK	NO. 01 02 03 04

This document is the property of A+C Architects. It is to be used only for the project and site for which it was prepared. It is not to be reproduced, stored in a retrieval system, or transmitted in any form or by any means, electronic, mechanical, photocopying, recording, or by any information storage and retrieval system, without the prior written permission of A+C Architects.

ATTACHMENT A



01 3/1/21



02 3/1/21

Material & Finishes Legend

01 Dark Grey Brick
 02 Light Grey Brick
 03 Dark Grey Metal Cladding
 04 Dark Grey Metal Cladding
 05 Dark Grey Metal Cladding
 06 Dark Grey Metal Cladding
 07 Dark Grey Metal Cladding
 08 Dark Grey Metal Cladding
 09 Dark Grey Metal Cladding
 10 Dark Grey Metal Cladding
 11 Dark Grey Metal Cladding
 12 Dark Grey Metal Cladding
 13 Dark Grey Metal Cladding
 14 Dark Grey Metal Cladding
 15 Dark Grey Metal Cladding
 16 Dark Grey Metal Cladding
 17 Dark Grey Metal Cladding
 18 Dark Grey Metal Cladding
 19 Dark Grey Metal Cladding
 20 Dark Grey Metal Cladding
 21 Dark Grey Metal Cladding
 22 Dark Grey Metal Cladding
 23 Dark Grey Metal Cladding
 24 Dark Grey Metal Cladding
 25 Dark Grey Metal Cladding
 26 Dark Grey Metal Cladding
 27 Dark Grey Metal Cladding
 28 Dark Grey Metal Cladding
 29 Dark Grey Metal Cladding
 30 Dark Grey Metal Cladding
 31 Dark Grey Metal Cladding
 32 Dark Grey Metal Cladding
 33 Dark Grey Metal Cladding
 34 Dark Grey Metal Cladding
 35 Dark Grey Metal Cladding
 36 Dark Grey Metal Cladding
 37 Dark Grey Metal Cladding
 38 Dark Grey Metal Cladding
 39 Dark Grey Metal Cladding
 40 Dark Grey Metal Cladding
 41 Dark Grey Metal Cladding
 42 Dark Grey Metal Cladding
 43 Dark Grey Metal Cladding
 44 Dark Grey Metal Cladding
 45 Dark Grey Metal Cladding
 46 Dark Grey Metal Cladding
 47 Dark Grey Metal Cladding
 48 Dark Grey Metal Cladding
 49 Dark Grey Metal Cladding
 50 Dark Grey Metal Cladding

Revisions

Rev	Date	Description
01	20/11/14	Issue for Information
02	02/12/14	Issue for Environmental Application
03	02/12/14	Issue for Development Application
04	11/05/15	

Client: Meriton MAE EIT ON

Architect: A+C Architects
 79 Macleay Street, Chippendale NSW 1585 AUSTRALIA
 Ph: +61 2 9311 8223 Fax: +61 2 9311 8200
 ABN: 53 003 782 250

Project: 84- 92 Epsilon Road, Zetland

Drawing Title: Elevations

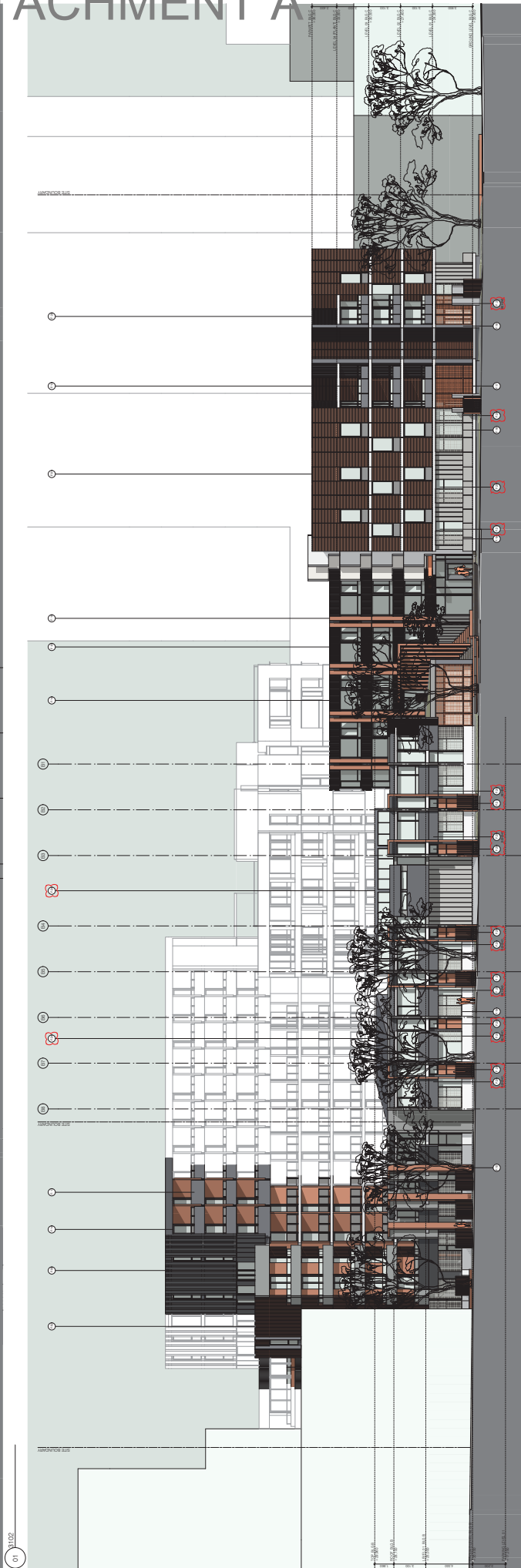
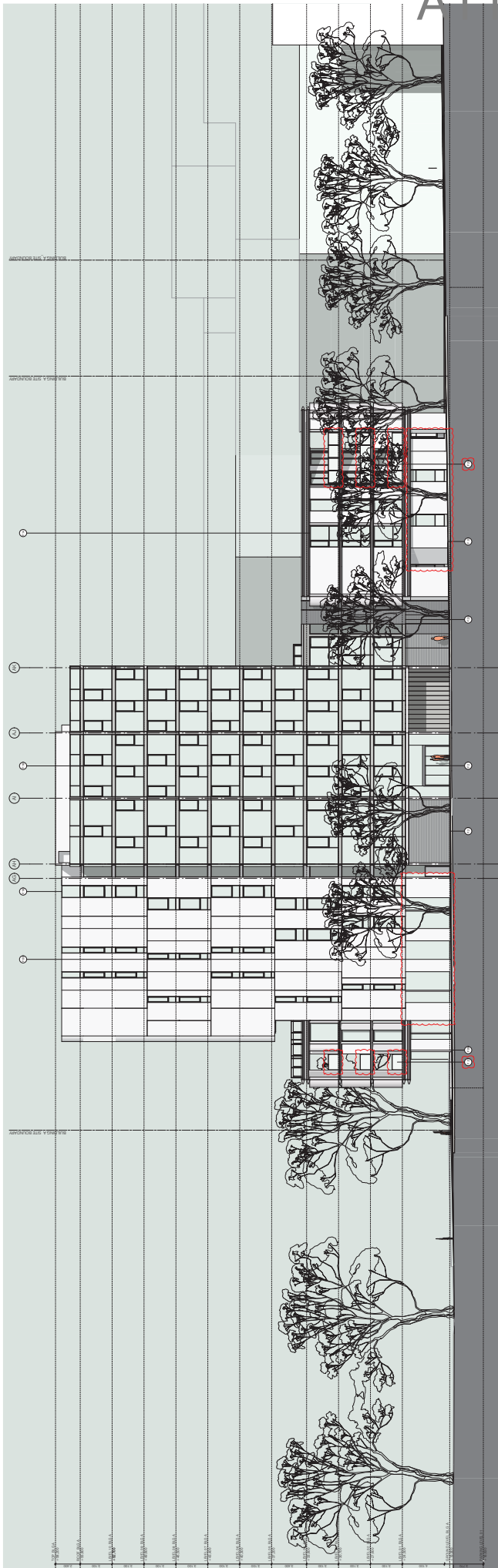
Approval:

Scale: 1:200@A1, 1:400@A3

Drawing No.: DK-00-3101

Issue: 05

ATTACHMENT A

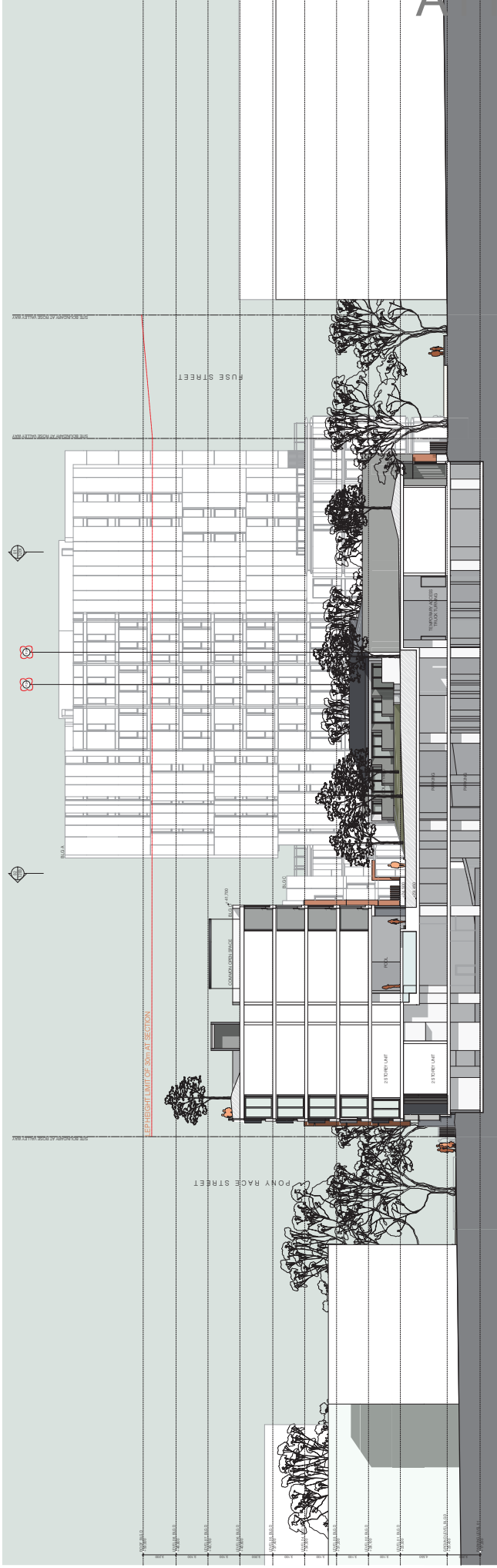


01

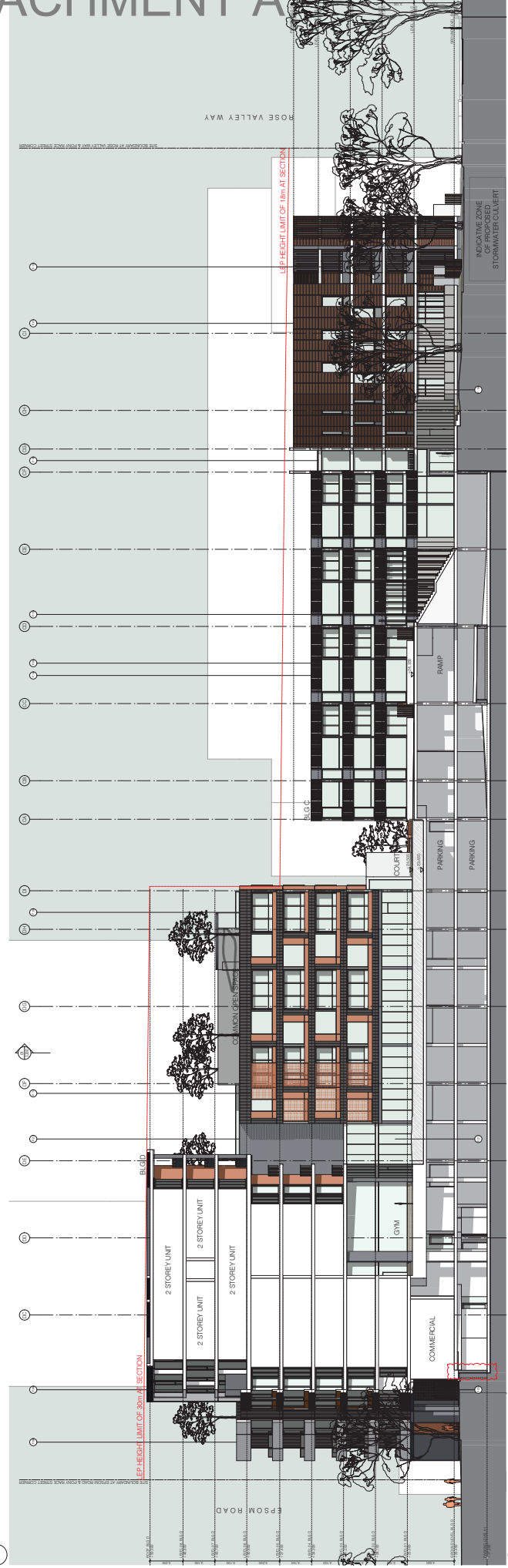
02

<p>Materials & Finishes Legend</p> <ul style="list-style-type: none"> 1.100 Concrete 1.101 Concrete 1.102 Concrete 1.103 Concrete 1.104 Concrete 1.105 Concrete 1.106 Concrete 1.107 Concrete 1.108 Concrete 1.109 Concrete 1.110 Concrete 1.111 Concrete 1.112 Concrete 1.113 Concrete 1.114 Concrete 1.115 Concrete 1.116 Concrete 1.117 Concrete 1.118 Concrete 1.119 Concrete 1.120 Concrete 1.121 Concrete 1.122 Concrete 1.123 Concrete 1.124 Concrete 1.125 Concrete 1.126 Concrete 1.127 Concrete 1.128 Concrete 1.129 Concrete 1.130 Concrete 1.131 Concrete 1.132 Concrete 1.133 Concrete 1.134 Concrete 1.135 Concrete 1.136 Concrete 1.137 Concrete 1.138 Concrete 1.139 Concrete 1.140 Concrete 1.141 Concrete 1.142 Concrete 1.143 Concrete 1.144 Concrete 1.145 Concrete 1.146 Concrete 1.147 Concrete 1.148 Concrete 1.149 Concrete 1.150 Concrete 1.151 Concrete 1.152 Concrete 1.153 Concrete 1.154 Concrete 1.155 Concrete 1.156 Concrete 1.157 Concrete 1.158 Concrete 1.159 Concrete 1.160 Concrete 1.161 Concrete 1.162 Concrete 1.163 Concrete 1.164 Concrete 1.165 Concrete 1.166 Concrete 1.167 Concrete 1.168 Concrete 1.169 Concrete 1.170 Concrete 1.171 Concrete 1.172 Concrete 1.173 Concrete 1.174 Concrete 1.175 Concrete 1.176 Concrete 1.177 Concrete 1.178 Concrete 1.179 Concrete 1.180 Concrete 1.181 Concrete 1.182 Concrete 1.183 Concrete 1.184 Concrete 1.185 Concrete 1.186 Concrete 1.187 Concrete 1.188 Concrete 1.189 Concrete 1.190 Concrete 1.191 Concrete 1.192 Concrete 1.193 Concrete 1.194 Concrete 1.195 Concrete 1.196 Concrete 1.197 Concrete 1.198 Concrete 1.199 Concrete 1.200 Concrete 	<p>Revisions</p> <table border="1"> <thead> <tr> <th>No.</th> <th>Date</th> <th>Description</th> </tr> </thead> <tbody> <tr> <td>01</td> <td>30/11/14</td> <td>Issue for information</td> </tr> <tr> <td>02</td> <td>10/02/15</td> <td>Issue for development application</td> </tr> <tr> <td>03</td> <td>10/02/15</td> <td>Issue for development application</td> </tr> <tr> <td>04</td> <td>10/02/15</td> <td>Issue for development application</td> </tr> </tbody> </table>	No.	Date	Description	01	30/11/14	Issue for information	02	10/02/15	Issue for development application	03	10/02/15	Issue for development application	04	10/02/15	Issue for development application	<p>Ver Appr</p> <table border="1"> <thead> <tr> <th>LC</th> <th>JK</th> </tr> </thead> <tbody> <tr> <td>LC</td> <td>JK</td> </tr> <tr> <td>LC</td> <td>JK</td> </tr> <tr> <td>LC</td> <td>JK</td> </tr> </tbody> </table>	LC	JK	LC	JK	LC	JK	LC	JK	<p>Key</p>	<p>Client Mention MELTON CITY COUNCIL</p>	<p>Architect A+C ARCHITECTS 78 Maple Street, Chesham, NSW 2568 AUSTRALIA Ph: +61 2 8311 8224 Fax: +61 2 8311 8200 ABN: 53 603 782 250</p>	<p>Project 94- 92 Epsom Road Zetland</p> <p>Prog. No. 14027</p>	<p>Drawing Title Elevations</p> <p>Drawing Status Approval</p>	<p>Scale 1:200 @ A1 1:400 @ A3</p> <p>Drawing No. DK-00-3102</p> <p>Issue 04</p>
No.	Date	Description																													
01	30/11/14	Issue for information																													
02	10/02/15	Issue for development application																													
03	10/02/15	Issue for development application																													
04	10/02/15	Issue for development application																													
LC	JK																														
LC	JK																														
LC	JK																														
LC	JK																														

ATTACHMENT A



01 SECTION 01: 1300

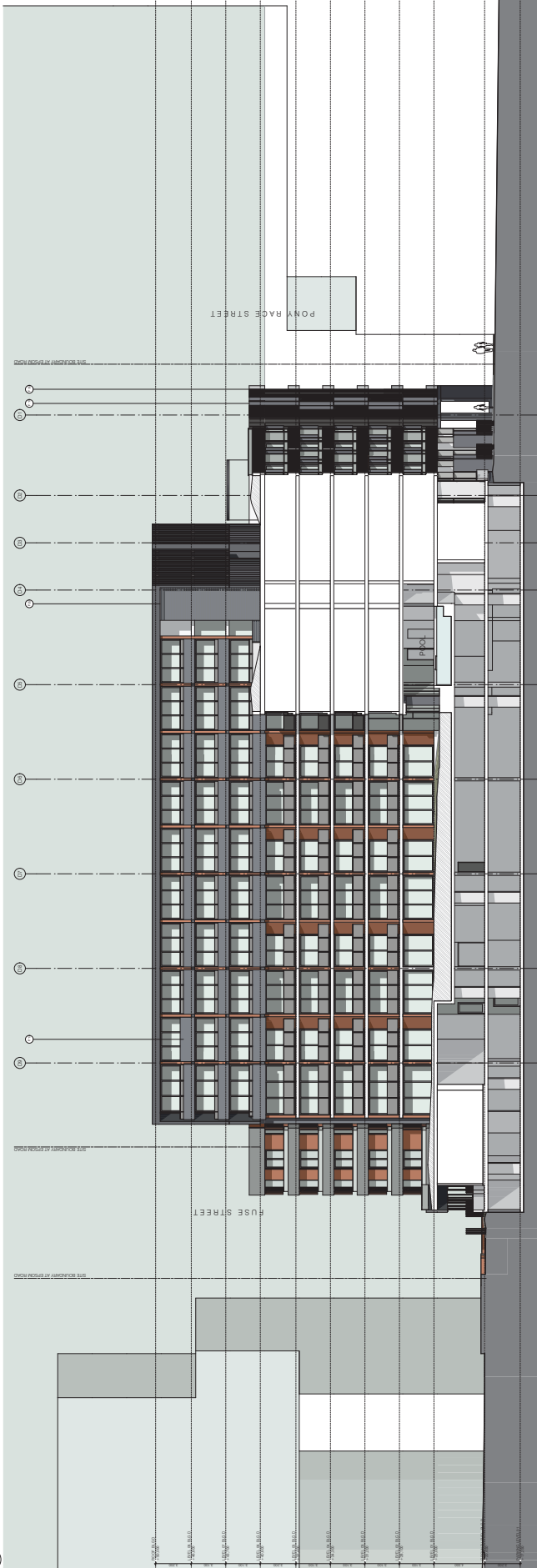
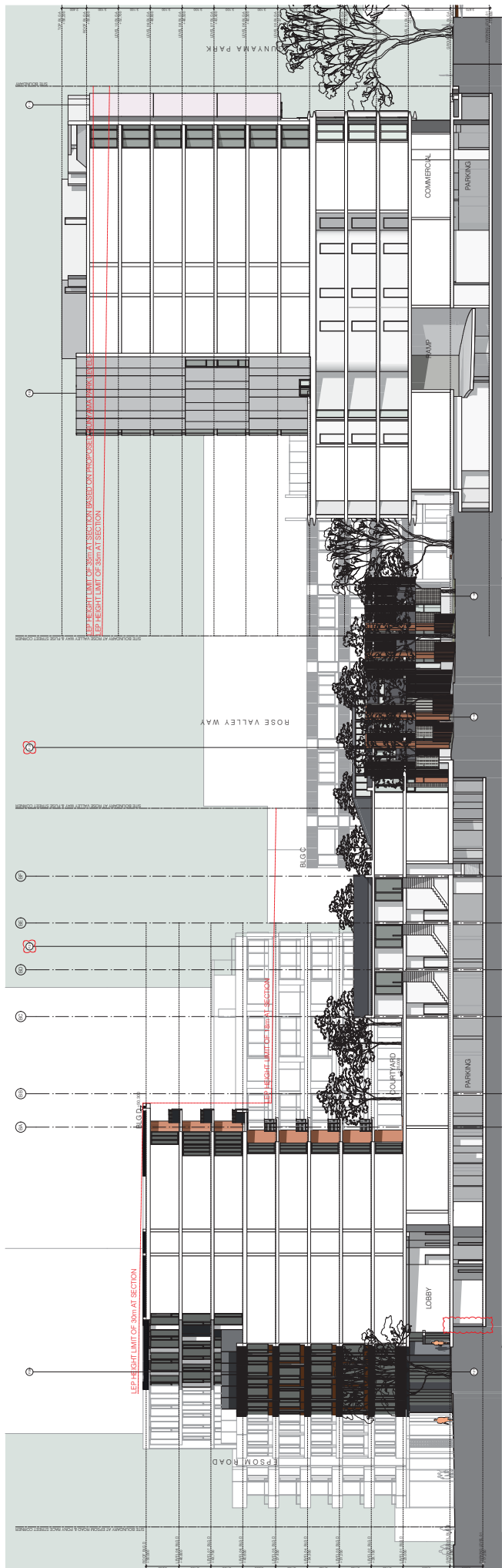


02 SECTION 02: 1300

Materials & Finishes Legend 01 - Concrete 02 - Brickwork 03 - Glass 04 - Timber 05 - Metal 06 - Paint 07 - Stone 08 - Render 09 - Insulation 10 - Roofing 11 - Landscaping 12 - Fencing 13 - Signage 14 - Lighting 15 - Other	Revision No. Date Description 01 10/01/2024 Initial Design 02 10/01/2024 Revise for EIA 03 20/01/2024 Revise for 6000m ² 04 20/01/2024 Revise for 6000m ² 05 30/11/2024 Revise for Development Application 06 09/07/2024 Revise for Development Application 07 11/02/24	Client Meriton MERITON AUSTRALIA 100 Queen Street Brisbane QLD 4000	Architect A+C ARCHITECTS 78 Maple Street Cheltenham NSW 2268 AUSTRALIA PH: +61 2 8311 8224 FX: +61 2 8311 8200 ABN: 53 003 782 250	Project 94- 52 Epsilon Road Zetland	Drawing Title Sections Drawing Status Approval	Scale 1:200@A1 1:400@A3	Drawing No. DK-00-3200	Issue 08

Drawings are the property of A+C Architects. All rights reserved. No part of this document may be reproduced or transmitted in any form or by any means without the prior written permission of A+C Architects. Notwithstanding to whomsoever. Not for construction. Not for use in any other project without the prior written permission of A+C Architects. Not for use in any other project without the prior written permission of A+C Architects.

ATTACHMENT A



Materials & Finishes Legend 01 Concrete 02 Brickwork 03 Glass 04 Timber 05 Metal 06 Paint 07 Other		Revision No. Date Description 01 10/08/14 Initial Design 02 10/08/14 Design Development 03 10/08/14 Final Design 04 10/08/14 Final Design 05 10/08/14 Final Design 06 10/08/14 Final Design 07 11/05/15 Final Design	Description For Information For Information For Information For Information For Information For Information For Information	Ver Appr LC JK LC JK LC JK LC JK LC JK	Client Meriton MERITON AUSTRALIA	Architect A+C ARCHITECTS 78 Maple Street, Chesham NSW 2868 AUSTRALIA Ph: +61 2 8311 8224 Fax: +61 2 8311 8200 ABN: 53 003 782 250	Project 84- 82 Epsom Road Zetland	Drawing Title Sections	Drawing No. DA-00-3201	Scale 1:200 @ A1 1:400 @ A3	Issue 07
--	--	---	---	---	--	--	--	----------------------------------	----------------------------------	--	--------------------

This set of drawings, the layout dimensions and the plan dimensions are for information only. They are not to be used for construction. The drawings are the property of A+C Architects. All rights reserved. No part of this document may be reproduced, stored in a retrieval system, or transmitted in any form or by any means, electronic, mechanical, photocopying, recording, or by any information storage and retrieval system, without the prior written permission of A+C Architects.